

# evo 200 control platform

## Data sheet

---

### Introduction

evo is a Multiparameter Versatile Control Platform with More Sensing at Less Cost. evo is Providing Simultaneous Monitoring with no limit of sensor to be connected. Thanks to expertise gained with Capacitive and Optical sensing, evo is now becoming the new frontier to Monitor a Process.

PAT initiative, Improvement or simply adding more sensing has never been so easy, simple, quick and cost effective as evo.



### Evo features

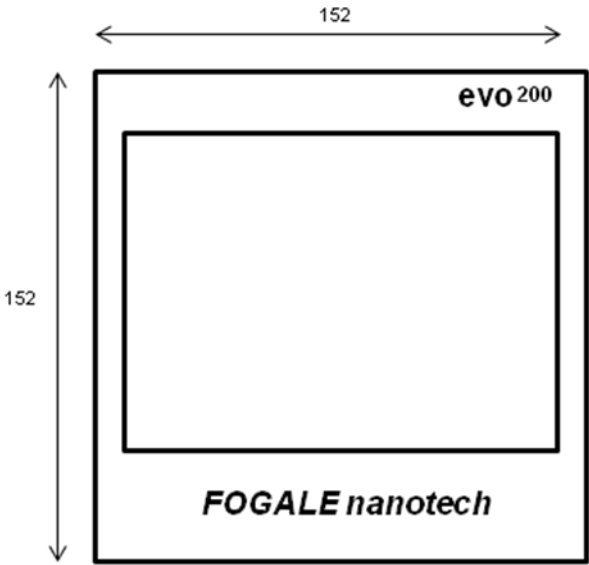
- Intelligent sensors on fieldbus network
- Multiple communication capabilities : 4-20mA, Modbus, Ethernet OPC
- Intelligent embedded software
- User friendly color touchscreen interface
- Upgradable at any time

### Document content

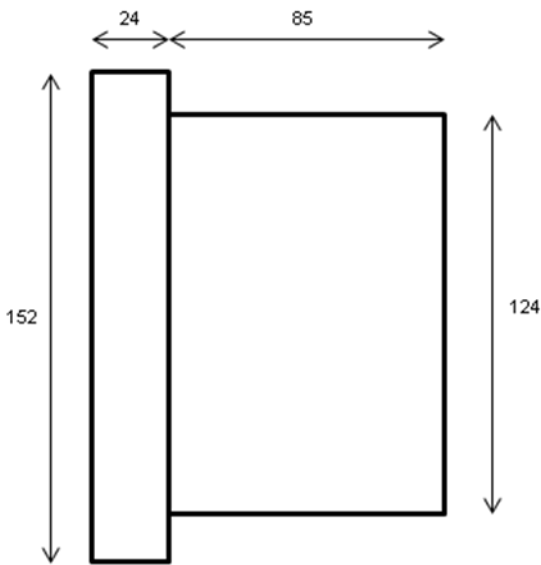
Dimension and drawing:	p2
Wiring diagram:	p3
Ordering information:	p4
Specifications:	p5

**Dimension and drawing:**

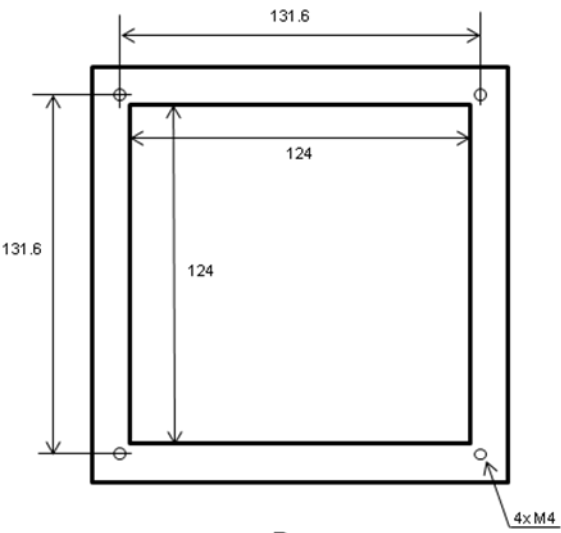
Evo 200 control platform is designed to be panel mounted



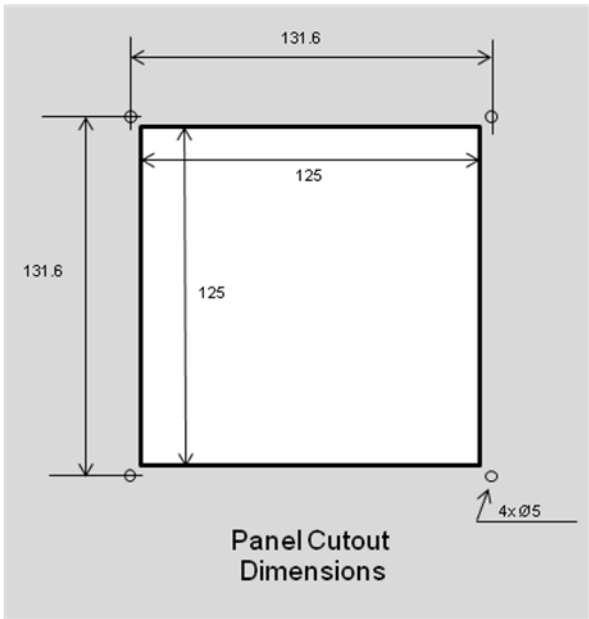
Front



Side



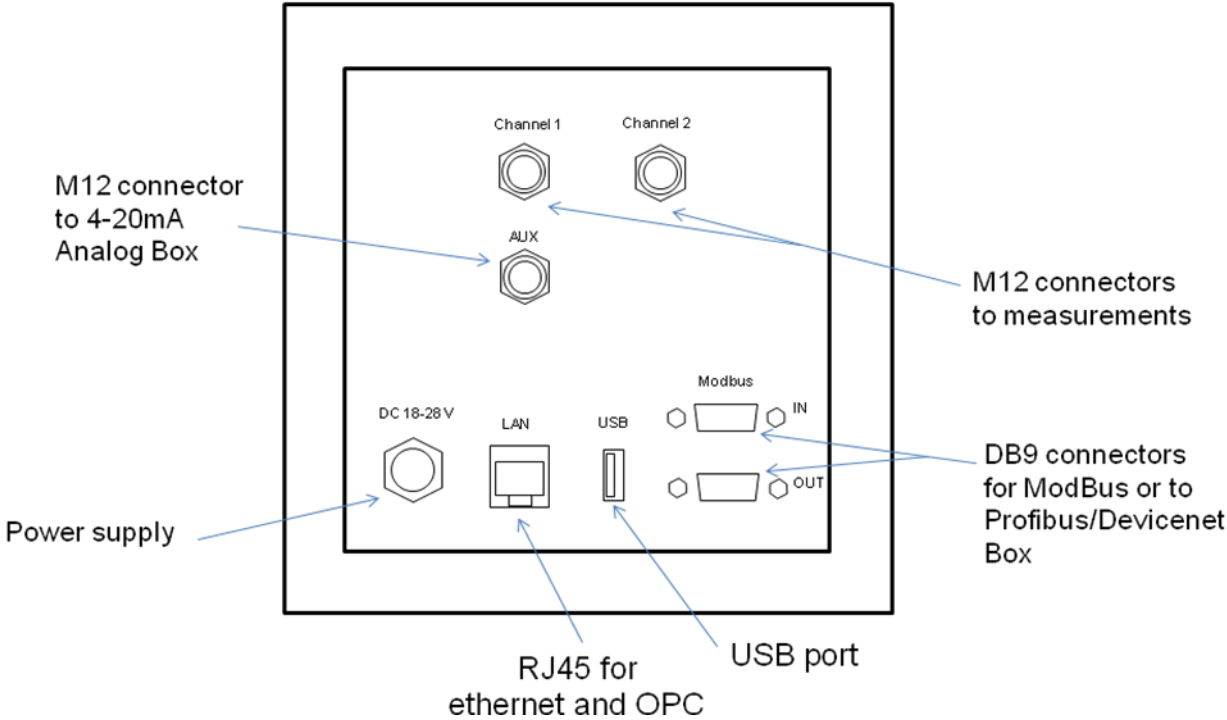
Rear



Panel Cutout Dimensions

Dimensions in mm

**Wiring diagram:**



**Ordering information:**

Designation	Reference
evo 200	PFBES 002000
Panel mount kit for evo 200	PFBES 002200
IP 65 back cover for evo 200	PFBES 002201
Rack mount kit for 1 evo 200	PFBES 002202
Power supply cable for 24V DC input for evo 200	PFBES 002204
AC-DC converter and cable for 110-240V AC power supply for evo 200	PFBES 002301
OPC XML-DA LICENSE for evo 200	PFBES 002100
4-20 mA ANALOG OUTPUT BOX - 8 Measures - 4 alarms (Din mount)	PFBES 000201
Modbus to Profibus DP box	PFBES 000210
Modbus to Devicenet Box	PFBES 000211
5 m Modbus cable	PFBES 000212
10 m Modbus cable	PFBES 000213
Ethernet cable (3m)	PFBES 000220
USB memory stick - 4 Gb	PFBES 000221

**Technical specifications:**

Enclosure	ABS, IP65 front panel Panel mount installation (Cutout 125x125mm) Dimensions : L:152 x W:152 x 109 mm
Operating conditions	Temperature : -10 + 50°C Humidity : 0-80%
Power supply	110-240V AC with AC/DC converter (included) Or 24V DC. 35 Watt. (1.5 A)
Probe connections	2 Channels (Channel = probe network) Power output : 24V DC Data input/output : RS 485
Analog outputs	Optionnal AUX to analog 4-20ma Box Current outputs : 8 analog 4-20 mA Alarms : 4 TTL
Digital inputs/ouputs	Digital outputs : Modbus (RS485 IN and OUT) Ethernet connection with RJ45 (automatic or manual IP) USB for downloading data, or firmware upgrade
Language	English
Display	5.7" Color touchscreen (virtual keyboard)

[www.fogalebiotech.com](http://www.fogalebiotech.com)

## FOGALE nanotech

125, rue de l'Hostellerie, Ville Active  
Bât A - Parc Acti plus  
30900 Nimes – France

Tel: + 33 (0)466 620 555

Fax: + 33 (0)466 627 160

Email: [infobiotech@fogale.com](mailto:infobiotech@fogale.com)